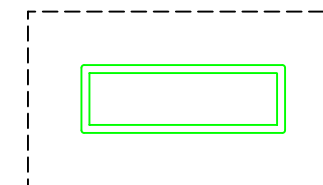
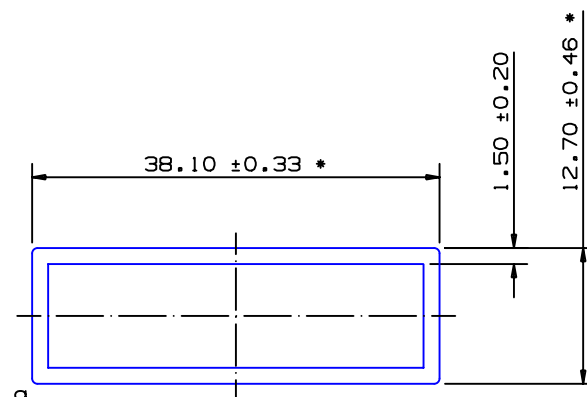


SECTION NO.

940-059

EXPOSED SURFACE
ACTUAL SIZE

* = 2/3 STANDARD TOLERANCE

SECTION DATA:

 $I_{xx} = 3\,826\text{ mm}^4$ $I_{yy} = 23\,500\text{ mm}^4$ Theta = 1.0° RadG_x = 5 mmRadG_y = 13 mmXC_{Right} = 19.05 mmXC_{Left} = 19.05 mmYC_{top} = 6.35 mmYC_{bot} = 6.35 mmZ_{xx}_{top} = 602 mm³Z_{xx}_{bot} = 602 mm³Z_{yy}_{right} = 1 234 mm³Z_{yy}_{left} = 1 234 mm³

a = 0.50 radius

1.50±0.20 TYP WALL THICKNESS
UNLESS OTHERWISE SPECIFIED0.40 RADIUS ON ALL OUTSIDE CORNERS
UNLESS OTHERWISE SPECIFIED

EXTRUDED FINISH : ARCHITECTURAL

A

AREA	143.2	SQ MM
WEIGHT	0.388	KG M
PERIMETER	190.3	MM
ANOD PERIM	100.7	MM
PAINT PERIM	100.7 (0.0)	MM
C CIRCLE DIA	40	MM
FACTOR	491	
ALLOY	6060HE	
TEMPER	T5	

 **G. James
Extrusion Co.**

A.C.N 010 828 234

1082 KINGSFORD SMITH DRIVE, EAGLE FARM, QUEENSLAND, 4009
PO BOX 1376, EAGLE FARM BC, 4009

PHONE : (07) 3877 2833 FAX : (07) 3877 2890

© COPYRIGHT 2004
THIS DRAWING IS THE PROPERTY OF
G. JAMES EXTRUSION CO. PTY LTD
ALL RIGHTS RESERVED

CUSTOMER

G. JAMES EXTRUSION Co.

CUSTOMER PART NAME

NO.

38.10 x 12.70 x 12.50 RECT BOX

SCALE

2:1

TOLERANCES IN ACCORDANCE WITH AS/NZS 1866:1997
APPLY UNLESS OTHERWISE SPECIFIED

DRAWN

SPG

CHECK

DATE

11/06/02

DWG. NO.

940-059

1 25/09/08 SPG SECTION NUMBER MODIFIED C/N 7829

NO DATE DR REVISION