

**Legend:**
**(C)** COLOURBOND® Steel Colour Match

**(G)** Gloss    **(M)** Matt    **(S)** Satin

## Powder Coat Colours



Black (S)



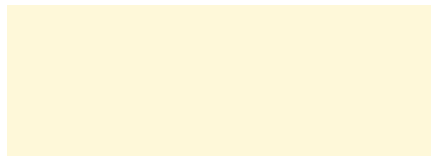
Monument (M)(C)



Woodland Grey (S)(C)



Ironstone (S)(C)



White Birch (G)



Architectural White (S)



Primrose (G)



Paperbark (S)(C)



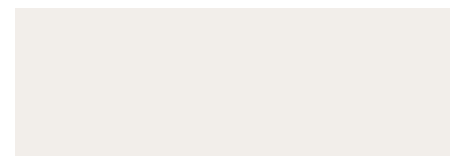
Pearl White (G)



Dune (S)(C)



Shale Grey (S)(C)



Surfmist (M)(C)



Ultra Silver (G)


 Silver Pearl Kinetic® (S)  
(Price on application)

## Anodised Finishes



Clear



Residential Bronze

**Notes:**

- All Anodised Finishes are price on application.
- All residential anodised finishes are supplied at AA15 (film thickness) with AA20 & AA25 available upon request.
- Polished Silver (internal products only) and other Bronze finishes are available – contact your G.James representative for further information.

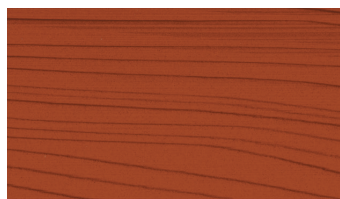
## Effecta® Powder Coat Colours



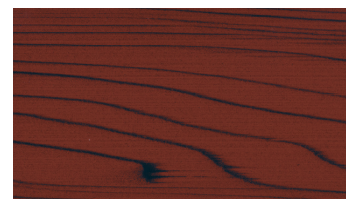
Snow Gum



Honey Gum



Cedar



Mahogany

**Notes:**

- Price and lead time for Effecta Colours on application.
- Effecta Colours are available in either Coarse or Fine grains.
- The Effecta process is best suited to 'flat profiled' extrusions, eg. louvre blades.
- Refer to the **G.James Terms and Conditions for Effecta Powder Coat Orders** prior to your order confirmation.

**Note: Colours displayed on this selector are intended as a guide only and are as representative as modern printing processes allow. G.James recommends once your colour/finish choice has been narrowed down, that a colour swatch or aluminium sample of your selected colour/finish be viewed prior to your order confirmation.**

### Warranty

All G.James surface finishing carries a seven (7) year warranty which is subject to the correct maintenance of the finish as outlined in the **G.James Maintenance Instructions**.

### Quality Assurance

All powder coated and anodised surface finishes are applied in compliance with the Australian Standards (AS) 3715 & 1231.

### Care & Maintenance

Cleaning is necessary if the fine finish of powder coated and anodised aluminium is to be preserved. Deterioration of the coating occurs mainly as a result of grime deposition and attack by contaminated moisture which in coastal and pool environments contain salt and sulphur compounds.

Deposited grime and contamination absorbs moisture like a sponge and holds it against the powder coated and anodised surfaces. This permits the

attack to proceed thereby damaging the coating which cannot be restored.

#### Frequency of Cleaning

Cleaning required is dependant on the severity of the environment.

- **Rural/Suburban Environments**

The maximum period between cleaning should never be more than six (6) months.

- **Coastal/Pool/Industrial Environments**

More frequent cleaning is necessary and the maximum period between cleaning should never be more than three (3) months.

Under the worst conditions involving heavy grime deposition and atmospheric pollution (e.g. sulphur compounds or salts) more frequent cleaning is advisable e.g. monthly if deterioration of the coating is to be prevented.

The cleaning of powder coated and anodised material should be performed using hand-cleaning and rinsing techniques. This should be

achieved by using small amounts of clean water and recommended cleaning products. Do not under any circumstances use an abrasive type cleaning agent as this will severely damage the surface of the material. Thoroughly rinse off any detergent with clean water. Hosing must be avoided under all circumstances. Dry preferably with a chamois, or alternatively, a soft cloth.

The cleaning of the product should be performed at a time that will allow the aluminium to dry quickly, preferably early in the morning.

We recommend the use of: Kitten 'Glo-Wash', Turtle Wax 'Zip Wash' or RE-PO 'Superwash'. Should these products give less than the desired results Turtle Wax 'Ice Polish' or RE-PO 'Cream Polish' can be used as per the manufacturer's instructions.

NOTE: Use only the above mentioned cleaning products. Do not use alternative products by the same or other manufacturers without written authorisation from G.James.

# Ph 132 877

# www.gjames.com

#### Queensland

Eagle Farm  
Logan City  
Capalaba  
Caboolture  
Ipswich  
Gold Coast

Toowoomba  
Sunshine Coast  
Gympie  
Hervey Bay

Bundaberg  
Gladstone  
Rockhampton  
Mackay  
Townsville  
Cairns

#### New South Wales

Sydney  
Lismore  
Queanbeyan  
Newcastle  
Taree

#### South Australia

Adelaide

#### Northern Territory

Darwin

#### Western Australia

Perth

