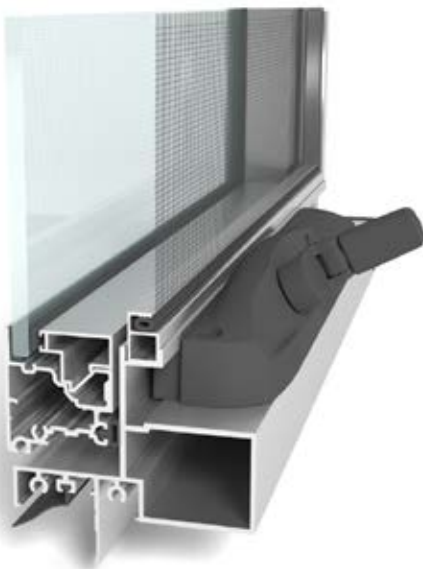




**G.JAMES**  
Windows & Doors

## Awning Window 048 Series

*Awning / Fixed Window combination units*



Ideally suited to either traditional or contemporary building styles, the G. James 048 Series Awning Window continues to represent great appeal for today's discerning home owner.

Awning windows by design hinge at the top (head) and project the sash outwards from the sill effectively opening a large portion of the window area to capture breezes and direct this airflow into your home's interior.

All aspects of the 048 Series window bear the inherit qualities and refinements gained from G. James' extensive history of manufacturing, NATA certified testing and site experience.

*Left image: Cut-through of awning window sill with optional flyscreen (guide only, subject to change without notice).*



## Features

*Photo courtesy of Grange Homes, Adelaide*

- Large openable area for maximising ventilation
- A wide sash profile which creates an appealing 'picture frame' effect
- Flush-faced external profile promotes the shedding of dust and rain
- Continuous PVC twin-seal system provides excellent weatherproofing and acoustic (noise reducing) qualities<sup>1</sup>
- Mitred corner joints for superior strength and torsional rigidity
- Slimline chainwinder with 304 Grade extension chain<sup>2</sup>
- Provision for fly, barrier or Crimsafe screens
- 7 year 'peace of mind' guarantee.

*(Terms and conditions apply)*

<sup>1</sup> For drainage purposes only 'single' seal fitted to bottom rail of sash.

<sup>2</sup> Chain extension can be restricted to comply with Fall Prevention from Openable Windows requirements



## Example Configurations

*See Page 7 for other configurations and the standard size range.*

Single Bay  
Awning Window



Awning Over  
Awning Window



Awning Over  
Fixed Window





## Hardware Options

*Black, non-keyed chainwinder supplied as standard. All other options are to be specified at time of quotation / order (additional costs apply).*



Chainwinder - Black



Chainwinder - White



Chainwinder - Silver

1. Non-keyed chainwinder shown on top row 2. Keyed chainwinder shown on bottom row

## Screens

### Flyscreens

G.James flyscreens are a practical and economical method to cover the open area of your windows and doors, helping to keep your home free from flies. Our flyscreens are constructed using an extruded aluminium frame and standard fibreglass mesh.



### Barrier Screens

Barrier screens offer an affordable, intermediate level of security for your home. G.James' barrier screens feature black Armagrilite (diamond-shaped, aluminium grille), fibreglass mesh and aluminium frame. This product complies with the *Building Code of Australia - Protection of Openable Windows* requirements.



### Crimsafe Screens

Crimsafe screens provide a superior level of safety and security to your windows and doors. The integral high-tensile, stainless steel mesh is discrete in appearance ensuring your views are unhindered. This product complies with the *Building Code of Australia - Protection of Openable Windows* requirements.





**G.JAMES**  
Windows & Doors

## Awning Window 048 Series

**Yes,** you do have a choice!

### A comfortable home happens not by chance but through good design.

When specifying the windows and doors for your home, you'll make decisions in relation to ventilation, light, aesthetics and operation – all very relevant considerations. There is however another equally important consideration that is often overlooked, and that is the type of GLASS you choose. The selection of a 'performance' glass can address such issues as heat gain, energy efficiency, security, noise and glare reduction - all of which are central to your comfort and the overall liveability of your home.

So before finalising your windows and doors don't miss the opportunity to understand and take advantage of the many benefits offered by G.James' comprehensive range of performance glass products. G.James welcomes your enquiry on how better glass selection can be the defining difference in your new build.



Safety



Security



Noise



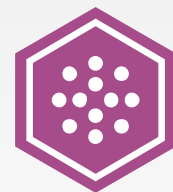
Heat Gain



Insulation



Glare



Fading



Colour Selector

**LEGEND:** (C) COLOURBOND® Steel Colour Match  
(G) Gloss (M) Matt (S) Satin

Powdercoat Colours



Black (S)



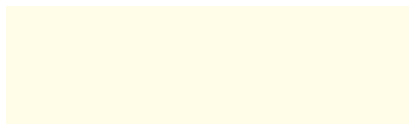
Monument (M)(C)



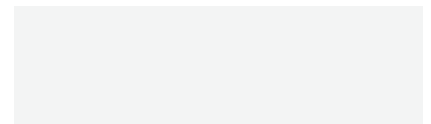
Woodland Grey (S)(C)



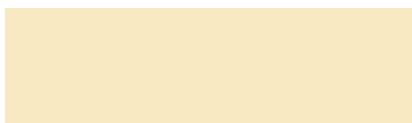
Ironstone (S)(C)



White Birch (G)



Architectural White (S)



Primrose (G)



Paperbark (S)(C)



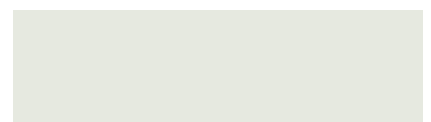
Pearl White (G)



Dune (S)(C)



Shale Grey (S)(C)



Surfmist (M)(C)



Ultra Silver (G)



Silver Pearl Kinetic® (S)  
(Price on application)

Anodised Finishes



Clear



Residential Bronze

Note: All Anodised Finishes are price on application. All residential anodised finishes are supplied at AA15 (film thickness) with AA20 & AA25 available upon request. Polished Silver (internal products only) and other Bronze finishes are available – contact your G. James representative for further information.



## Technical Data

<b>Max. Size<sup>1</sup></b>	1500mm (h) x 900mm (w)
<b>Min. Width</b>	450mm
<b>Max. Glass Thickness</b>	<ul style="list-style-type: none"><li>• Single glazed – 13.52mm</li><li>• Double glazed (IGU) – 24mm</li></ul>
<b>Max. Water Performance</b>	600 Pa
<b>Perimeter Frame Width</b>	48mm
<b>WERS Data<sup>2</sup></b>	<ul style="list-style-type: none"><li>• U-Value range: 3.30 – 6.60</li><li>• SHGC range: 0.26 – 0.61</li></ul>
<b>Acoustics<sup>2</sup></b>	Up to Rw 37
<b>Bushfire Attack Level</b>	Tested and certified to BAL-40
<b>Fixing Types</b>	Fin fix and face fix
<b>Compatible Construction Types:</b>	Brick veneer, clad wall, block wall, cavity brick and modular/transportable
<b>Air Infiltration:</b>	This window conforms with AS2047 air infiltration requirements for air-conditioned buildings

<sup>1</sup>Maximum sizes are a guide only and subject to the wind rating or SLS/ULS requirements of the site.

<sup>2</sup>Consult your G.James representative to determine the most suitable product configuration for your requirements.

## IMPORTANT

### **Don't let the opportunity pass to consider your glass options.**

When specifying the windows and doors for your home, you'll make decisions in relation to ventilation, light, aesthetics and operation – all very relevant considerations. There is however another equally important consideration that is often overlooked, and that is the type of GLASS you choose. The selection of a 'performance' glass can address such issues as heat gain, energy efficiency, security, noise and glare reduction – all of which are central to your comfort and the overall liveability of your home.





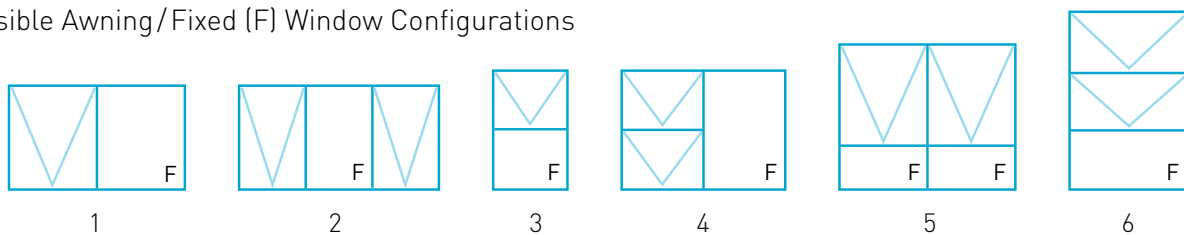
Standard Size Range / Configurations

**Stud Opening** (Frame Size with reveals + 10mm clearance)  
**Outer Frame Size** (excludes fixing fin & reveals)

Width (mm)

		660	960	1260	1560	1860	2160	2460
		610	910	1210	1510	1810	2110	2410
Height (mm)	650							
	950							
	1250							
	1550							
	1850							

Possible Awning/Fixed (F) Window Configurations



**Product Specific Notes:**

- Configurations greater than 2410mm wide available.
- Sizes detailed above are based on 'top hung' sashes with chainwinder. Certain sizes may not be available if stays and cam handle hardware option is specified.
- Black chainwinders supplied as standard. White, Silver and keyed chainwinders available on request (additional charges apply).
- Multiple bay configurations will be supplied in equal splits unless requested otherwise.
- Minimum window width for a 'centre drive' chainwinder is 540mm. Minimum window width for 'off-centre drive' winder is 450mm.