



G.JAMES

CORPORATE DIRECTORY



DEFINING The Past



1910 – 1950

- 1913 George James arrives in Australia from England
- 1917 George establishes G. James Glass Merchants (Brisbane)
- 1924 Glass factory at 31 Bridge St, Fortitude Valley (Brisbane) established
- 1946 Joe Saragossi arrives in Australia from the United States
- 1948 Joe & Pearle James marry



◀ The late George James, Founder – G. James Glass Merchants

1951 – 1970

- 1958 Passing of George James
- 1959 Private family company formed with Joe, Pearle and Gertie Baratin (nee James) as shareholders
- 1964 Toowoomba branch
- 1965 Manufacture of the Ador Hilite aluminium window and door system (U.S.) commences at Fortitude Valley and Toowoomba factories.
- 1966 Commercial fabrication & contracting commences
- 1967 Barry Saragossi (Joe & Pearle's eldest son) joins the company
- 1968 Riverview branch
- 1970 Gold Coast branch

▶ The late Joseph Saragossi AO., Founder – G. James Glass & Aluminium



◀ The late Barry Saragossi

1971 – 1980

- 1971 Lewis Saragossi (Joe & Pearle's youngest son) joins the company
- 1972 Commercial fabrication, Glass (Merchandising & Retail) & Administration activities move from Fortitude Valley to West End (Brisbane)
- 1976 Bundaberg branch
- 1977 Glass toughening factory, Smithfield (Sydney)
- 1979 Rockhampton & Sunshine Coast branches
- 1980 Woodridge branch



▲ West End Factory 1975



▲ Joe Saragossi & Former Queensland Premier, Sir Joh Bjelke-Petersen at the official opening of the first extrusion press (1982)

1981 – 1990

- 1982 First aluminium extrusion press & surface finishing plants 1159 KSD site, Eagle Farm (Brisbane);
First monumental curtain wall project (Comalco House, Brisbane) undertaken
- 1984 Head Office established 800 KSD site, Eagle Farm;
Curtain wall factory Fison Ave, Eagle Farm;
Lismore branch
- 1985 Gladstone branch
- 1986 Narangba Glass laminating factory;
Narangba branch
- 1988 Hilite (Residential) branch relocates from Fortitude Valley to Eagle Farm
- 1989 Glass toughening factory, Campbellfield (Melbourne)
- 1990 Commercial fabrication and Glass divisions relocate to 1007 KSD site Eagle Farm;
Cairns, Townsville & Hervey Bay branches



▲ Logo adopted throughout the 1980's & 1990's

1991 – 2000

- 1991 Campbellfield aluminium warehouse;
G. James Furniture, later becoming Gossi Park & Street Furniture
- 1992 Three extrusion presses operating at 800 KSD site (two new presses phased in (1987/1990) & 1159 KSD relocates)
- 1992 Corporate Head Office moves to 1084 KSD site;
Mackay branch
- 1994 Gympie branch
- 1997 Cheras Industries acquired
- 1998 IGU & glass coating lines Schneider Rd site, Eagle Farm
- 1999 Aluminium extrusion plant, Smithfield;
Contract Glass & Aluminium Pty Ltd (Melbourne) acquired



▲ Logo introduced in 2004

2001 – 2010

- 2001 New powder coating plant 994 KSD site;
Perth aluminium warehouse
- 2005 Passing of Joe Saragossi;
Perth warehouse relocated to Henderson;
Perth branch
- 2006 Lewis Saragossi ascends to the role of Chairman of Directors;
New anodising plant 994 KSD site;
Newcastle & Taree branches
- 2008 Extrusion high-rack storage facility 992 KSD site
- 2009 Darwin branch
- 2010 QuickAlly Scaffold acquired;
Adelaide branch



▲ First Toowoomba factory, branch relocated in 1997

2011 – Present

- 2013 Queanbeyan/Canberra branch
- 2014 Major upgrades of Sydney & Melbourne glass production facilities
- 2015 All Eagle Farm based glass operations centralised Schneider Rd site
- 2017 100 years established;
New aluminium extrusion factory 990 KSD site



▲ Logo design released 2016

Defining The Future



Lewis Saragossi

CHAIRMAN OF DIRECTORS
MANAGING DIRECTOR



Rachel Driessen

DIRECTOR



Sarah Roeloffs

DIRECTOR



▲ Glass Factory, Fortitude Valley (1940)



▲ Head Office, Eagle Farm



Achieving 100 years (our centenary) in business is a significant milestone that the G. James Group welcomes with enormous pride and celebration.

From the early days in 1917 when George James (the founder and my maternal grandfather) would walk the streets of Brisbane seeking glass orders through to the entrepreneurial stewardship of Joe Saragossi, our rich history has been one of great enterprise, diversification and vision. Sustained growth over several decades has seen us expand from a single glass factory in Fortitude Valley to today having over 2000 employees operating from 35 locations.

Our philosophy has always been to offer our customers value for money products, an industry leading experience and a strong reinvestment policy to enhance our manufacturing capabilities, all of which are backed by the core ideals of integrity and honesty.

G. James' success has been possible through the contribution, support and loyalty of many people. Together with staff (past & present), customers and suppliers, we have developed many valued relationships.

Supported by our state of the art manufacturing facilities, strong management, dedicated and capable staff, I look forward to future opportunities and growth with great optimism.

Please join us on our journey.

Lewis Saragossi
Chairman & Managing Director
G. James Group of Companies

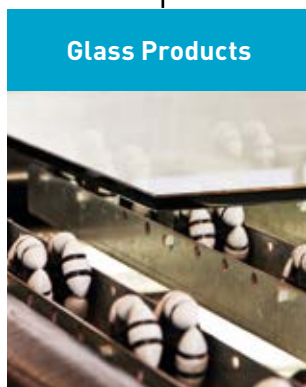


G.JAMES

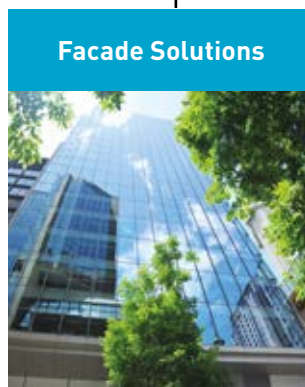
Group of Companies



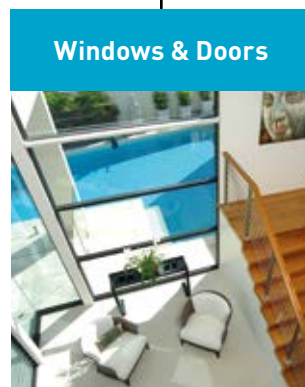
Extruding standard geometric, proprietary, structural and DNV certified aluminium extrusions. Support services include die, design, powder coat & anodised surface finishing, cut-back & special purpose machining, warehousing and dispatch.



Manufactures and/or markets an extensive range of laminated toughened, decorative & painted glass products, in addition to a variety of insulated glass solutions. Four large scale production centres equipped with state-of-the-art processing facilities service the needs of the building & construction, automotive, marine, rolling stock and security industries



Servicing Australia's building contractors with the expertise and products necessary to realise the successful completion of commercial, high-rise and curtain wall projects. An ability to satisfy ever-challenging design aspirations is enhanced by a strong tradition of specialising in bespoke facade & cladding solutions, inhouse capabilities and support services along with the advantages of Australian based manufacturing.



An Australia wide network of manufacturing branches supply the housing and construction market with a comprehensive range of windows, doors and associated screening products. Commercial contracting capability along with the benefits of locally based operations complete the full service package offered to our valued customer base.

Subsidiary Divisions



▲ Photo courtesy of Chris Clout Design

Aluminium Products

The growing demand for aluminium extrusions by the various fabricating divisions from within the group saw G.James Aluminium Products commence operations in 1981. This company has since developed the necessary expertise and infrastructure to become recognised as a reliable supplier to the general extrusion market throughout Australia and the Asia Pacific region.



▲ 1800 m/t extrusion press & handling system, Brisbane

Press Capabilities

G.James operate five extrusion presses with capacity in excess of 3500 tonnes per month:

Brisbane

- 1 x 1650 m/t (178mm container)
- 1 x 1800 m/t (178mm container)
- 1 x 2800 m/t (228mm container)
- 1 x 3500 m/t (254mm container)

Sydney

- 1 x 3250 / 3500 m/t (228mm container)

G.James Aluminium Products is accredited to ISO 9001 and vigorously embraces a quality control management system which stipulates the product quality is monitored throughout all stages of the manufacturing process.

Die Design & Manufacturing

G.James utilise the latest CAD software and an array of CNC machining centres and EDM wire cutting machines to design and manufacture the extrusion die sets required to produce the specified profile.

CNC Machining Centres

Client material can be processed using our rapid and accurate multi-axis CNC machining centres for cutting, drilling, thread cutting and slotting operations.

◀ In-house die design & manufacturing service





▲ Extruded aluminium profiles supplied for the manufacture of heavy vehicle bullbars.
(Photo courtesy of K-Craft)



▲ G.James supplied marine certified aluminium sheet, plate & extrusions to Echo Yachts – 84m luxury trimaran project. (Photo courtesy of True North Mark)

Surface Finishing

G.James supplies a range of attractive and durable anodised and powder coated surface finishing options. Anodising offers clear, bronze, black and bright silver & gold in either satin, brushed or media-blasted finishes. G.James also operates Dulux and Akzo Nobel approved powder coat facilities (1 x vertical & 1 x horizontal) for the application of standard and high durability powders.

Warehousing, Packing & Dispatch

To ensure the fast, efficient turnaround of extrusion orders, G.James can accommodate warehousing, packing and dispatch options.



▲ Vertical powder coat line, Brisbane



▲ Anodising plant, Brisbane



▶ Powder coated aluminium louvres supplied and installed for Brisbane City Council Bus Depot

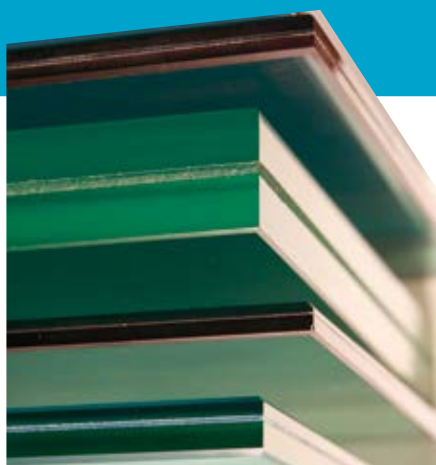


Glass Products

▲ G.James supplied 13.52mm & 17.52mm GJ ToughLam to BMW Showroom Brookvale

The Glass Products division was established in 1977 to improve the availability of toughened safety glass to the construction industry. Increased demand for toughened glass was being driven by a greater acceptance of the product's performance and flexibility as a building material. Over the years this division has developed and expanded their range and operations in order to provide prompt service and innovative products.

Today, G.James has the following glass processing capabilities:



Laminated Glass

With production facilities located in Brisbane, Sydney & Melbourne, G.James is capable of manufacturing bulk quantities of standard laminates in addition to a variety of custom laminates specifically designed for architectural installations and transport & security applications. Satisfying particular colour, thermal and mechanical performance requirements are all part of the service provided by G.James.

The G.James laminated glass range includes GJ Solect®, GJ ToughLam & GJ OptiLam products.



◀ Toughening furnace, Smithfield



◀ Automatic glass cutting and breakout line, Eagle Farm



Barangaroo City Walkway Bridge Lift Shaft comprising 21.52mm & 25.52mm Low Iron GJ ToughLam.

Toughened & Heat Strengthened Glass

The strength and safety features of toughened glass allow architects and designers far greater scope with the use of glass in buildings, creating a total vision concept by eliminating vertical and horizontal frame members.

G.James Glass Products operate the following heat processing facilities:

Brisbane – Three horizontal furnaces

Sydney – One horizontal furnace and one vertical tong furnace for speciality glass

Melbourne – One horizontal furnace

The G.James heat treated glass range includes GJ ToughLam & GJ Arma products.

Insulated Glass Units

Custom-made insulated glass units are manufactured in Brisbane, Sydney & Melbourne. Each glazing line incorporates an automatic edge deletion system, spacer bender and secondary sealing unit. By using a combination of various glass and spacer widths, G.James can manufacture an extensive range of energy efficient units suitable for both residential and commercial applications.

The G.James insulated glass unit range is marketed under GJ TwinGlaze.



▲ GJ Shieldtek Rolling Stock supplied for the Bombardier VLocity train



▲ Custom GJ TwinGlaze 50 (50mm) insulated glass units supplied for EPIC Apartment Building, Melbourne

◀ Quality inspection on the IGU line



◀ Foreground: 586 Series custom designed 'Strongback' (mullionless) window system; Stairwell: Heat strengthened green laminate; All glazing by G.James Commercial Glass & Glazing; Translational Research Institute (TRI), Brisbane



▲ Programming vertical CNC machining centre



▲ Mater Hospital, Springfield



▲ Glass processing

▼ *GJ Solarplus* (Low E on Grey) TwinGlaze units, GE Headquarters Springfield

Reflective & Coated Glass

G.James Glass Products process a range of reflective and Low E coated glass marketed under the brand name of GJ SolarPlus. These products offer an extensive range of colours and configurations with varying levels of performance.

Decorative Glass

G.James employs the latest Dip-Tech technology to print coloured images, patterns and designs directly onto glass. This range of ceramic painted glass products are marketed under the Colourlite range and is available from Brisbane, Sydney & Melbourne operations.

G.James' continual investment in technology, research and development, and infrastructure, combined with the ability to produce high quality glass products to world best standard, will ensure G.James Glass Products remains at the forefront of secondary glass processing.



▲ Internal view GE Headquarters Springfield. *GJ Solarplus* (Low E on Grey) TwinGlaze units



GJ Colourlite, Stella Maris Church, Gold Coast



▼ Dip-Tech ceramic on-glass printing process producing a *GJ Colourlite* panel

► *GJ Colourlite*, Chinatown Mall, Brisbane



Facade Solutions

► One Central Park, Sydney

▼ Macquarie Bank, Sydney



With the in-house resources and integrated supply channels of both the Glass and Aluminium Products Divisions, G.James Facades Solutions operates specialised contracting divisions that provide a complete product and installation service package for the glazing of building facades.

This division offers an extensive range of cost effective, window, door, framing and cladding solutions to suit the full scope of commercial applications including high rise office and apartment buildings, shopping centres, institutions, industrial complexes and hotels. These products cater for a variety of performance, operational and glazing requirements.

The contracting division also specialises in the recladding and refurbishment of existing windows and facades.





▲ 505 St. Kilda Road, Melbourne

Chifley Tower, Sydney



Balencia Apartments, Melbourne



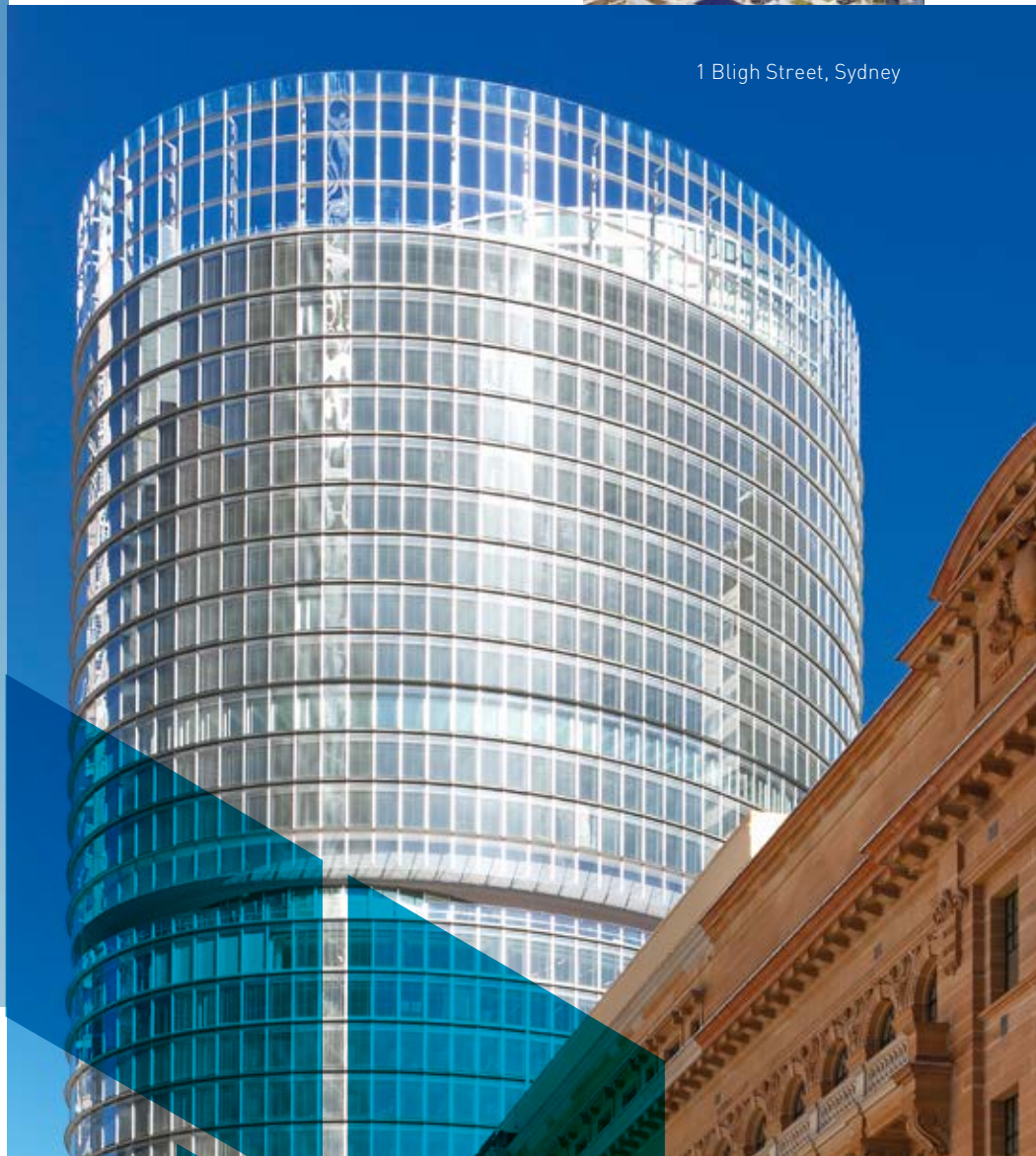
▲ 2 Park St, Sydney

▶ Hilton Hotel, East Tower, Gold Coast



▲ Swanston Square, Melbourne

1 Bligh Street, Sydney



▲ Auckland Sky Tower, New Zealand



▲ Darling Park 1, 2 & 3, Sydney



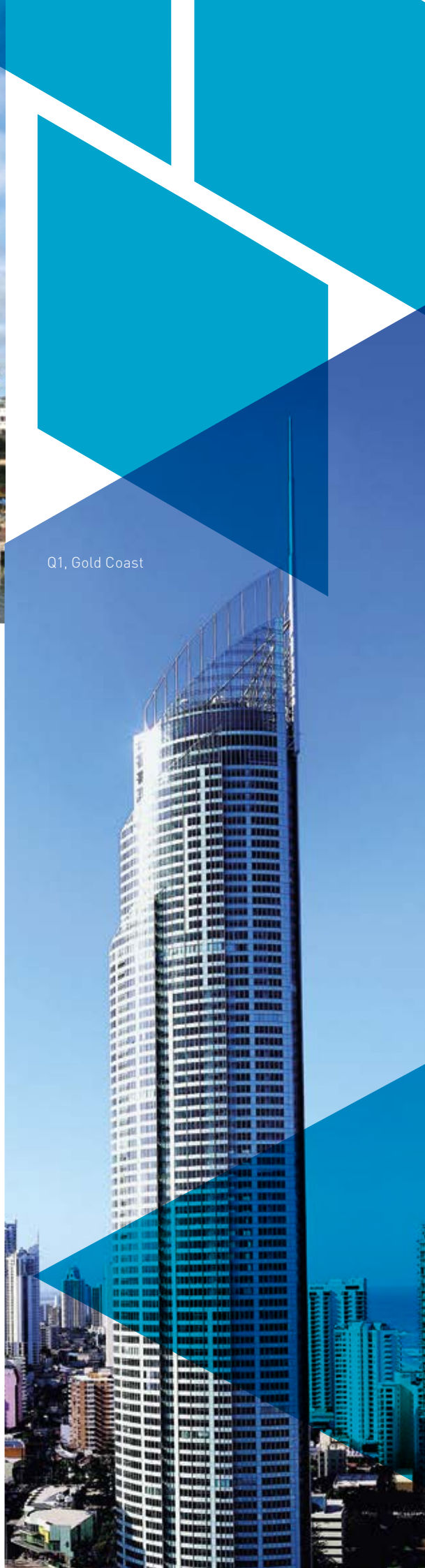
▲ Epic Apartments, Melbourne



▲ Latitude, Sydney



▲ Sullivan Nicolaides Headquarters, Brisbane



Q1, Gold Coast

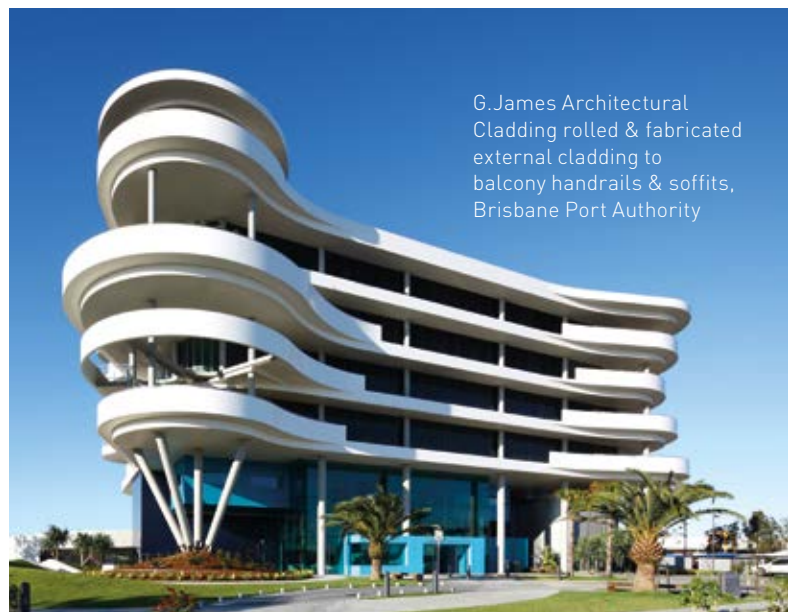
▼ M&A, Brisbane



▲ G.James past and present – from left to right: Comalco House (1983); Central Plaza One & Two (1988 & 1990); Riparian Plaza (2005), Brisbane



▲ University of Technology, Sydney



G.James Architectural Cladding rolled & fabricated external cladding to balcony handrails & soffits, Brisbane Port Authority



Commercial Glass & Glazing

Utilising the support, versatility and infrastructure of G.James' Glass Division, the Commercial Glass & Glazing team specialises in the supply and installation of frameless assemblies, entries & shopfronts, bi-folding & multi-stacking door systems, and heat strengthened, laminated balustrading. The expertise of this division also extends to complex and custom designed projects including structurally glazed lift shafts, stairwells, glass screens, overhead awnings and pool windows.

- ◀ G.James Architectural Cladding fabricated fascia, wall & column cladding, Lexus Dealership Townsville



- ▲ G.James glazed stairwell, Translational Research Institute (TRI), Brisbane



- ▲ Circle on Cavill, Gold Coast (Photo courtesy of Mantra Group)

- ▼ Corso Library, North Lakes



Windows & Doors



▲ Private Residence (Photo courtesy of Craig Cleary Constructions Pty Ltd)

G.James Windows & Doors incorporates the regional network of branches which began in 1964 with the establishment of the first branch in Toowoomba. This business initially focussed on glass distribution and glazing however market demand soon required the branch to expand into the supply of residential windows and doors.

As regional centres expanded, construction projects became more complex and contract orientated. Consequently branches developed and extended their operations and product range to include commercial and high performance windows and doors.

Today there are 24 branches/sales centres extending from Darwin to Sydney in addition to Adelaide and Perth. Each branch is structured, equipped and resourced to provide prompt and reliable service to their own geographical area.

The product and services which are offered by G.James Windows & Doors fall within four distinct categories:

Glass and Glazing

The branch network is engaged in the marketing of glass from a comprehensive range of stocklines, in either original sheets, cases, blocks or cut-to-size. Clear, tinted and patterned glass and mirror are all part of the

extensive range on offer. Laminated, toughened and coated glass products in addition to GJ TwinGlaze units are sourced from G.James Glass Products Division. Full glass processing, glass replacement service and specialised installations also form part of branch operations.

Residential Products

All branches can supply a wide range of quality residential products suitable for use in houses, low-rise apartments, aged-care facilities, transportable homes and factory complexes.

An installation service is also available in addition to patio enclosures and window replacements.



▲ Private Residence (Photo courtesy of Craig Cleary Constructions Pty Ltd)



◀ Finned glazing & 050 Series Louvre Windows
(Photo courtesy of Valdal Projects)

▼ 246 Series Corner Sliding Door
(Photo courtesy of Ownit Homes)



▲ Gas strut window (Designer: Mark Gacesa of Ultraspace, Builder: Stewart Homes Pty Ltd)



Private Residence (Designer: Mark Gacesa of Ultraspace, Builder: Stewart Homes Pty Ltd)



▲ Private Residence (Photo courtesy of R & L Badcock Builders Pty Ltd.)

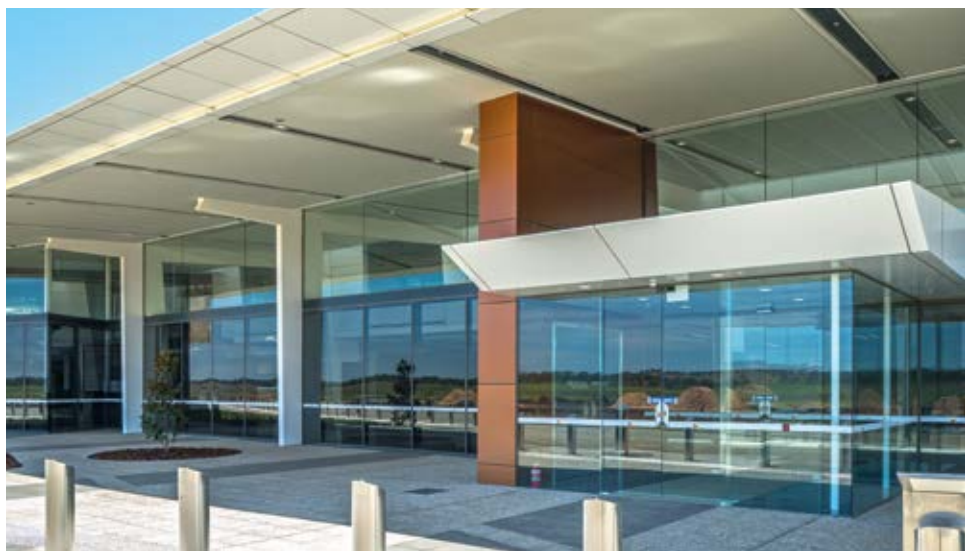


▲ Australian Catholic University, Brisbane (Photo courtesy of Tuba Media Productions / Tomkins Commercial & Industrial Builders Pty Ltd)

Commercial Contracting

Possessing the necessary expertise and fabrication facilities, G.James branches can estimate, manufacture, glaze and install the standard range of commercial framing systems. With the support of G.James Facade Solutions for design, engineering and component processing, branches are capable of successfully coordinating and completing large and complex commercial projects

► Wellcamp Airport, Toowoomba





▲ 132 Series Sliding Windows (Photo courtesy of Ownit Homes)



▲ 477 Series Bi-fold Door & Window



Each branch has the knowledge and capability to market and service the various speciality products manufactured by G.James Glass & Aluminium. This includes custom design extrusions, aluminium access equipment, flashings and architectural cladding.

▲ 445 Series Sliding Doors, Raked Fixed Windows & 050 Series Louvre Windows (Photo courtesy of Kings Point Windows & Glass, G.James Licensee Ulladulla)

▼ 477 Series Bi-fold Door & 475/050 Series Fixed & Louvre Window Combination Units (Photo courtesy of Mark Winter Constructions)



▲ 246 Series Multi-stacking Door & 048 Series Awning Windows (Photo courtesy of R & L Badcock Builders Pty Ltd.)



Subsidiary Divisions

► Aluminium Trestles



The diverse capabilities and resources of the G. James Group have combined and expanded over recent years to allow the development of a wide variety of speciality products which in many instances complement the mainstream product base, while others are unique in their market.



QuickAlly Scaffolding & Access Solutions manufacture an extensive range of durable, high quality, temporary structures all designed for working at heights in complete safety. Proudly Australian made and supported by our industry leading warranty, this range encompass everything from an aluminium step-up, through to a customised work platform and right up to multi-level building perimeter scaffolds.



▲ Aluminium Systems Scaffold Tower including Stretcher Stair Access

QuickAlly cater for a host of construction, maintenance, warehouse & production activities and also offer a custom design & manufacture service if required. In addition to placing the highest priority on worker safety, a strong emphasis is placed on engineering for long-term value, ease of mobility/portability and maximum functionality.

For further information on the QuickAlly range and scaffold hire service please see page 26 or visit quickally.com.au.



▲ Customised Aviation Access Platform



▲ Truck Access Safety System

GOSSI

PARK & STREET FURNITURE

Gossi Park & Street Furniture offer a core range of attractive, low maintenance furniture constructed from a selection of aluminium and (or) timber components. This range is complemented by stylish aluminium shelters, non-combustible bin surrounds and other park enhancements such as bollards, drinking fountains & bike racks, making Gossi the obvious choice for park or street 'scaping' projects. Unique aluminium shelters, non-combustible bin surrounds and park enhancements such as bollards and bike racks further complement Gossi's range in both park and urban contexts. See gossi.com.au for more information.



▲ Akiva Shelter



▲ Bin Enclosures



▲ Parkway Seat



▲ Bus Shelter



Specialising in the production of aluminium castings for commercial, rural, marine and general purpose applications. These include lawn mower bases, trailer wheels, roof tile pallets, lighting and irrigation components, zinc anodes and structural castings.



▲ Drinking Fountain



▲ Sample of aluminium castings

Corporate Directory

Aluminium Products

Queensland

990 Kingsford Smith Drive,
Eagle Farm, QLD 4009
Phone +61 7 3877 2833
E: extrusion_sales@gjames.com.au

New South Wales

26 Long Street,
Smithfield, QLD 2164
Phone (02) 9732 2444
E: sydney_extrusion@gjames.com.au

Victoria

217 Rex Road,
Campbellfield, VIC 3061
Phone (03) 9219 2077
E: melbourne_extrusion@gjames.com.au

Western Australia

10 Jackson Street,
Bassendean, WA 6054
Phone (08) 9494 6333
E: perth_extrusion@gjames.com.au

Glass Products

Queensland

1007 Kingsford Smith Drive,
Eagle Farm, QLD 4009
Phone +61 7 3877 2866
E: glass_sales@gjames.com.au

New South Wales

26 Long Street,
Smithfield, NSW 2164
Phone (02) 9732 2111
E: sydney_glass@gjames.com.au

Victoria

217 Rex Road,
Campbellfield, VIC 3601
Phone (03) 9219 2000
E: melbourne_glass@gjames.com.au

Facade Solutions

Queensland

1007 Kingsford Smith Drive,
Eagle Farm, QLD 4009
Phone +61 7 3877 2855
E: commercial@gjames.com.au

Specialised Glazing

1007 Kingsford Smith Drive,
Eagle Farm, QLD 4009
Phone (07) 3877 2225
E: glass_contracting@gjames.com.au

Architectural Cladding

1159 Kingsford Smith Drive,
Eagle Farm, QLD 4009
Phone (07) 3877 2811
E: archclad_admin@gjames.com.au

New South Wales

26 Long Street,
Smithfield, NSW 2164
Phone (02) 9732 2450
E: sydney_commercial@gjames.com.au

Victoria

102 Fairbank Road,
Clayton, VIC 3168
Phone (03) 9552 2488
E: contract_glass@gjames.com.au

Gossi Park & Street Furniture

1082 Kingsford Smith Drive,
Eagle Farm, QLD, 4009
Phone (07) 3877 2856
E: sales@gossi.com.au

Cheras Industries Pty Ltd

Building 20, Schneider Road,
Eagle Farm, QLD, 4009
Phone (07) 3815 4444
E: cheras@gjames.com.au

QuickAlly Scaffolding & Access Solutions

Queensland

876 Kingsford Smith Drive,
Eagle Farm, QLD 4009
Phone (07) 3877 2811
E: sales@quickally.com.au

New South Wales

94 Long Street,
Smithfield, NSW 2164
Phone (02) 9732 2488
E: sales@quickally.com.au



Windows & Doors

QUEENSLAND

Brisbane

30 French Street,
Eagle Farm, QLD 4009
Phone (07) 3877 2844
E: hilite@gjames.com.au

Logan

23 Kingston Road,
Woodridge, QLD 4114
Phone (07) 3827 6333
E: woodridge@gjames.com.au

RedlandBay

176 Redland Bay Rd,
Capalaba, QLD 4157
Phone (07) 3823 9090
E: woodridge@gjames.com.au

Caboolture

40 Sodium Street,
Narnagba, QLD 4504
Phone (07) 3897 0811
E: narangba@gjames.com.au

Ipswich

15 Verrall Street,
Riverview, QLD 4303
Phone (07) 3810 5355
E: riverview@gjames.com.au

Gold Coast

636 Nerang Rd,
Ashmore, QLD 4212
Phone (07) 5588 5755
E: goldcoast@gjames.com.au

Toowoomba

319 Taylor Street,
Toowoomba, QLD 4350
Phone (07) 4690 2111
E: toowoomba@gjames.com.au

Sunshine Coast

586 Maroochydore Road,
Kunda Park, QLD 4556
Phone (07) 5430 4544
E: maroochydore@gjames.com.au

Gympie

6 Bonnick Road,
Gympie, QLD 4570
Phone (07) 5480 6666
E: gympie@gjames.com.au

Hervey Bay

63-65 Booral Rd,
Urangan, QLD 4655
Phone (07) 4128 5733
E: hervey_bay@gjames.com.au

Bundaberg/Gladstone

49-51 Enterprise Street,
Bundaberg, QLD 4670
Phone (07) 4155 4888
E: bundaberg@gjames.com.au

Rockhampton,

Featherstone Street,
Rockhampton, QLD 4701
Phone (07) 4931 3977
E: rockhampton@gjames.com.au

Mackay,

9 David Muir St,
Slade Point, QLD 4740
Phone (07) 4955 8844
E: mackay@gjames.com.au

Townsville,

599 Ingham Rd,
Garbutt, QLD 4810
Phone (07) 4753 4600
E: townsville@gjames.com.au

Cairns,

28 Redden Street,
Portsmith, QLD 4870
Phone (02) 4042 9388
E: cairns@gjames.com.au

NEW SOUTH WALES

Sydney

26 Long Street,
Smithfield, NSW 2164
Phone (02) 9732 2477
E: sydney_domestic@gjames.com.au

Newcastle

65 Pendlebury Road,
Cardiff, NSW 2285
Phone (02) 4940 3444
E: newcastle@gjames.com.au

Taree

10 Grey Gum Road,
Taree, NSW 2430
Phone (02) 6539 3811
E: taree@gjames.com.au

Lismore

25 Habib Drive,
South Lismore, NSW 2480
Phone (02) 6627 4000
E: lismore@gjames.com.au

Queanbeyan/Canberra

46 Aurora Avenue,
Queanbeyan, NSW 2620
Phone (02) 6132 8455
E: canberra_admin@gjames.com.au

SOUTH AUSTRALIA

Adelaide, 263 Edinburgh Road,
Edinburgh, SA 5111
Phone (08) 8182 788
E: adelaide@gjames.com.au

Head Office/Administration

Queensland

1084 Kingsford Smith Drive,
Eagle Farm, Brisbane, QLD 4009
Phone +61 7 3877 2333
E: admin@gjames.com.au



Product & Service Range

Aluminium Products

- Custom Designed Extrusions
- In-house Toolmaking Service
- Certification for Classification Societies
- Angles, Channels, Flats & Tubes
- Sheet & Plate, CNC Machining, Routing & Punching (WA only)
- Marine Grade Profiles, Sheet & Plate
- ArmaGrille® Security Mesh
- Fine Tolerance, High Tensile Strength Aluminium Conveyor Idler Tube
- Precision Cutting (length only) & Fabrication Service
- Clear, Bronze, Black, Silver & Gold Anodising
- Caustic Etch, Mechanical Etch (Media Blast) & Polish Pre-treatment
- Powder Coat, Fluorocarbon (PVF2) & Fluoropowder (PVF3) Surface Finishing
- Woodgrain Powder Coat Surface Finishing
- Sheet Metal Flashings
- Aluminium Welding
- CNC Routing
- Custom Aluminium Fabrication
- Mandrel Bending & Rolling
- Aluminium Sheet
- Gravity & Pressure Die Casting (Cheras Industries)

Glass Products

- GJ FLOAT - Float Glass
- GJ PROTECT - Laminated Glass
- GJ PROTECT^{plus} - Structural Laminated Glass
- GJ TOUGH - Toughened Glass
- GJ STRENGTH - Heat Strengthened Glass
- GJ THERM - Insulating Glass Units
- GJ DESIGN - Decorative Glass
- GJ SOLUS - Low-E Monolithic Glass
- GJ SOLECT - Low-E Laminated Glass
- GJ LUMATHERM - Low-E Insulating Glass Units (Residential Applications)
- GJ GUARD - High Performance Security Glass
- GJ TRANSPORT - Heavy Equipment & Rolling Stock Glass
- GJ FLOOR - Stair & Floor Glass
- GJ CYCLONE - High Impact Glass
- GJ CLEAN - Self-Cleaning Glass
- GJ XRAY - Lead Glass
- GJ ANTI-REFLECTIVE - Low Reflection Glass

- GJ OBSERVE - Observation Glass
- GJ CURVE - Curved Glass
- Glass Processing, Commercial Glass Replacement & Installation Service
- Pool Windows & Infinity Edges

Facade Solutions

- Commercial Windows & Doors
- Curtain Wall Facade Systems
- Recladding & Refurbishment of Existing Windows & Building Facades
- Pocket Glazed Framing Systems
- Frameless Glass Entries, Shopfronts & Assemblies
- Hinged, Sliding & Automatic Entries
- Double Glazed Windows & Doors
- Sloping Rooflights & Skylights
- Project Balustrading & Handrailing
- Architectural Shading Systems
- NATA Approved Testing Facility
- Thermal Break Windows & Doors
- Architectural Cladding

Windows & Doors

- Sliding Windows & Doors
- Double Hung, Casement, Awning & Bi-fold Windows
- Standard, Arched & Raked Fixed Windows
- Hinged, Bi-fold & Multi-stacking Doors
- Louvre Windows (Glass, Aluminium or Timber Blades)
- Pocket Glazed Framing Systems
- Frameless Glass Entries, Shopfronts & Assemblies
- Hinged, Sliding & Automatic Entries
- Architectural Cladding
- Gas Strut Windows
- Portable Building Windows & Doors
- Fly, Barrier & Crimsafe Screens
- Retractable Roller Screens
- Glass Splashbacks
- Framed, Semi-frameless & Frameless Showerscreens
- Energy Efficient, Noise Reducing & Solar Control Glazing Solutions
- Sliding Wardrobe Doors & Mirrors
- Thermal Break Windows & Doors

Gossi Park & Street Furniture

- Seating & Table Settings
- Bin Enclosures
- Park & Bus Shelters
- Park Accessories

QuickAlly Scaffolding & Access Solutions

- Aluminium System Scaffolds
- Aluminium Mobile Towers
- Public Access Stairs
- Edge & Void Protection
- Bridging Beams & Stretcher Stairs
- Trestle Safety Systems
- SPF/Order Pickers
- Aluminium Heavy Duty Planks,
- Adjustable Handy Stools & Step-ups
- Adjustable Mitre Saw Benches
- Customised Access Platforms
- Stair Treads
- Swinging Stage Cradles
- Truck Access Safety Systems
- Scaffold Hire (Brisbane & Sydney)

Miscellaneous

- Window & Door Systems (available to approved external fabricators)
- Export Co-ordination Service
- PVC Extrusions

Defining who we are

The G.James Group of Companies has grown to become involved in the successful manufacture, fabrication, processing and installation of a diverse range of products, and is Australia's leading integrated glass and aluminium manufacturer and contractor.



Defining
Spaces.

Defining our brand

Our new brandmark and positioning will simultaneously reflect the G.James Group's rich past and propel us into our exciting future.

Our new brandmark also reflects our values – the things we want the world to associate with us. These are the qualities we demonstrate at G.James in order to be the best we can be.

Our new brandmark has been developed with the structure of the Company in mind, and its ability to create unique solutions and products to the same high standards.

The overall strength of the single logo is a direct link to that of the overarching G.James Group of Companies structure and the divisions within. The logo has the ability to include influences and segments that join to form one solid mark.

Defining our products

G.James is a dynamic company focused on providing value for money solutions through the diversity of glass and aluminium. With such a broad and diverse range of products, it is vital that we understand our customer's requirements so we can confidently and effectively source the most appropriate product solution.



G.JAMES
gjames.com